

History in brief.

ATH-design was indirectly established in 2003 by two individual companies. Patrik Windh was running a process design company and Anders Torkelsson was running a tool design company. They were cooperating together between the mechanical design industries.

ATH-design AB is a company from 2006 and today are 6 people working in the company.

Main strengths and provided services.

ATH-Design is mainly focusing on mechanical design of industry production plants and equipments. We have long practical and theoretical experience from chemical process industry and car industry. Our strength is to combine our knowledge in our projects. Usually are we working as an extra recourse in the customer organization and we are focusing on long term development and relationship.

We like to be involved from the start and throughout the project to the phase of up and running. Then we can coordinate important tasks and information so we reach the realization and our goals in the project.

Usually activities in the project are:

- Project management or responsible of separate parts in the project.
- Preparation of requirement specification.
- Layout of project like total flow sheet and 3D model.
- Basic design. Different kinds of capacities, positions, mechanical design, mass and energy balance, process parameters etc.
- Risk assessments.
- Detail design. Equipment specification, process and mechanical design etc.
- Procurement.
- Site preparation and erection.
- Commissioning and start up.

Fields of activities.

ATH has already documented experience and success in following fields:

- Chemical and process industry.
 - Cooling system in food industry.
 - Resins plant in epoxy industry. Storage area and production.
 - Cooling system in resins plant. Capacity 1,6MW
 - Safety system Isover resins plant (Phenol/Formaldehyde).
 - Safety system in resins plant (Phenol/Formaldehyde 60 kton/year).
 - Capacity and energy savings in Spray Drier production.
 - Safety and classification of EX proofed areas.
 - Decrease waste production in resins plant.
 - Pressurized equipments.
 - Storage areas and piping in process plants.

- Thin plate industry
 - Tools for sheet metal thicknesses of 0,1mm and upwards.
 - Different kinds of tools from industries like cars, white goods, electronics, food etc.
 - Production lines of sheet metal parts.
 - Layout and design of new products. Considering costs and design.

- Environment.
 - Sludge preparation of household waste. To charge it into biogas chamber.
 - Preparation and dewatering of sludge in industry and waste areas.
- Production
 - To make capacity and resource analyses direct in production.

Company facilities and equipment.

The office is located at the countryside in Hörja about 10km from Hässleholm. ATH is focusing on latest technology and are using the latest version of design tools like AutoCad and Inventor etc.

Some of the latest projects.

Glas wool production:

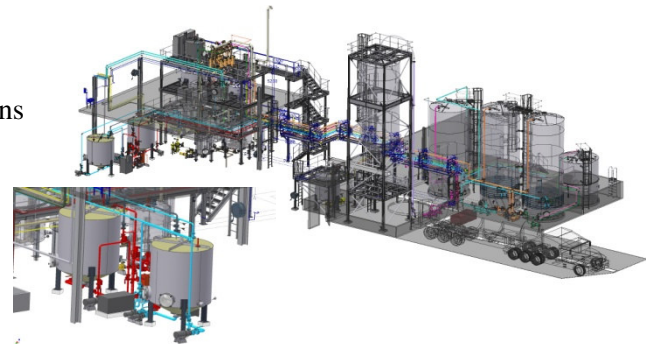
2006.

Knauf Insulation.

We have made all engineering of storage area and production unit for their preparation of resins. The resins are made in several steps and finally supplied to the continuously production of glass wool.

The project was a total delivery included engineering, procurement, installation and commissioning.

Site location: Krupka Czech Republic.



2009.

Flowcrete Sweden

A new storage area of liquid products and increasing of production capacity.

2008.

Kronospan.

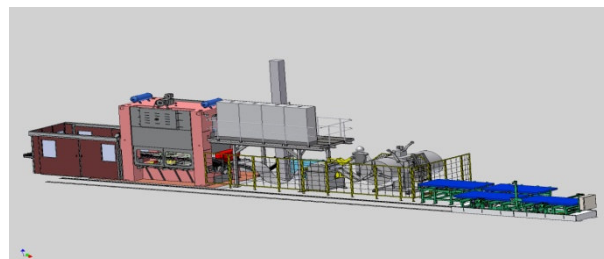
ATH have worked together with Kronospan (Swiss) and PARESINS (Perstorp) and the project was to make basic engineering and detail design of a Phenol and Formaldehyde plant in Czech Republic. It's a Greenfield project of a plant that can produce 45kton/year.

2008

Elfa.

A fully automated production line of ELFA bracket (shelf).

It's a sheet metal product that will be produced with 54pcs/minute.



Contacts:

ATH-design AB PL.5047 282 94 Hörja www.ath-design.se	Contact process. patrik@ath-design.se Tele: +46 451-742022	Contact tool design. anders@ath-design.se Tele: +46 451-742021
---	--	--